

Australian Made



NORGLASS
Specialty Finishes

Australian Owned

2024 - 2025 SURFACE COATINGS CATALOGUE



norglass.com.au

DIY LIKE A PRO

ABOUT NORGLASS

AUSTRALIAN MADE AND FAMILY OWNED

Over the past four decades, NORGLASS have developed a comprehensive range of paints and surface treatment products that help you DIY like a pro. Purchased in 1982 by Les and Jan Baker, it has been an Australian made and family-owned business for over 40 years and is now run by their son Brett Mould.

All NORGLASS products are manufactured in their Sydney factory, with each raw material selected for its performance, not price. In fact, every product manufactured by NORGLASS undergoes a triple-check evaluation to make sure the raw materials are to their highest standard before being used.

This process is carried out until the manufactured product is placed on the warehouse shelf for sale. That's why every item that leaves the factory really is the best of the best – and why NORGLASS has been fully endorsed by market acceptance nationally in some of the harshest and most extreme climates on earth.

With over 50 products, NORGLASS has a start-to-finish approach for consistency and a quality, professional finish every time. From solvents, cleaners, additives, glues, fillers and reinforcing materials to all-important primers, undercoats, finishes and clears – NORGLASS really does have a solution for every DIY need.

LIQUID GLASS PROJECT

Use LIQUID GLASS with COLOURANTS or our new METALLICS range to create one of a kind tabletops, trays or benchtops. Finish with NORTHANE CLEAR for a chemical resistant and food grade coating.

LIQUID GLASS AREA FORMULA
1 mixed litre = 1,000 cubic cm
Therefore 1 sq. metre @ 1mm thick = 1 litre

INTRODUCING TOM WILLIAMS

NORGLASS is pleased to introduce Tom Williams as our brand ambassador. You may know Tom from strutting his stuff as the winner of Dancing with the Stars, jumping on boats of all sizes as a presenter on The Great Outdoors, or from radio. But did you know that Tom started his career as a builder? He was the lead builder on popular TV show, Room for Improvement. Now he wants to let everyone know about the benefits, range and quality of NORGLASS. We're proud to welcome him to the family so together we can help everyone DIY like a pro!



FILLERS | GLUES | RESINS

STAYBOND EPOXY GLUE

Easy to use 2 pack glue. Solventless and non-staining with exceptional strength. Bonds to most prepared surfaces: timber, metals, fibreglass, concrete, fibro, ceramics and glass. It is totally waterproof when cured. Excellent gap filling and non-sagging characteristics. SIZES: 3.8kg, 1.9kg, 950g, 470g & 200g packs.



NORSYSTEM BOAT EPOXY RESIN

A clear waterproofing epoxy resin for the boat building and surfing industries. Solventless and non-shrinking. Can be extended with NORGLASS MICROTALC, or where weight saving is important, NORCELLS BLENDED EXTENDER. NORSYSTEM RESIN can be used as a flexible sealer where a clear finish is desired. Ideal as a reinforcing resin for fibreglass, Dynel and other composites. Base and hardeners are supplied in colour coded packs to avoid confusion. There are options for slow or fast hardeners to cater for local temperature conditions.



SIZES: 24 litre, 6 litre, 3 litre & 1 litre packs.

Extenders for NORSYSTEM are shown on page 10

LIQUID GLASS EPOXY RESIN

Solventless, water-clear pour-on gloss finish for bar and table tops. Gives a "clear liquid coating" that can be used for découpage applications. Other uses are for filling timber surface irregularities prior to clear finishing. Excellent adhesion, flexibility and abrasion resistance. SIZES: 30 litre, 15 litre, 6 litre, 3 litre, 1.5 litre & 750ml packs.



DEEP POUR LIQUID GLASS CASTING RESIN

A slow-curing epoxy resin system specially designed for deep pouring and large volume casting projects. Deep Pour Liquid Glass generates low heat, allowing castings at a maximum depth of 50mm in one go!

SIZES: 6 litre, 15 litre, 30 litre, 600 litre



LIQUID GLASS COLOURANTS and METALLICS

Perfect for tables, floors, art pieces, jewellery, fishing lures and wherever else your imagination may take you.

SIZES: COLOURANTS: 50ml, METALLICS: 20g



NORFILL EPOXY FILLER

A paste-like white, waterproof filler that can be sanded and left as a finish, or painted over. It has excellent non-sagging properties so that even large cracks or holes can be filled in one application. NORFILL is solventless and does not shrink, making it the perfect filler where strength and adhesion is important. May be applied to all prepared surfaces and will not react with other coatings or treatments. The finished product can be drilled and tapped where desired.

SIZES: 4kg, 2kg, 1kg, 500g & 250g packs.



NORFLEX EPOXY FILLER

A lighter more flexible version of NORFILL for large areas of cosmetic filling where movement and flexing are important. Offers a 25% weight saving by mass over NORFILL. Superb gap filling and sanding qualities.

SIZES: 3kg & 750g packs.



USEFUL TIPS

Epoxies are heat generating in the cure process and require temperatures above 10°C. In the cold weather pre-heating the unmixed components in hot water will assist with the cross-linking. Using more hardener than specified usually softens the outcome.

POLYESTER RESIN

General purpose waxed fibreglassing resin. Ideal for waterproofing shower bases, roof guttering, boat and caravan repairs. Requires NORGLASS POLYESTER RESIN CATALYST for curing (see below).

SIZES: 4 litre, 2 litre, 1 litre, 500ml & 250ml.



POLYESTER RESIN CATALYST

Reactive agent used to promote the setting (curing) of NORGLASS POLYESTER products (see above).

SIZES: 500ml, 80ml, 40ml & 20ml.



DIY LIKE A PRO

SEALERS | PRIMERS | UNDERCOATS

NORSEAL WOOD TREATMENT

Low viscosity epoxy solution designed to penetrate, seal and waterproof particle boards and timbers. Protects against termites and teredo worm. Recommended to be overcoated with a primer such as SHIPSHAPE within 4 weeks of application. In permanently shaded areas NORSEAL can alternatively be coated with a clear finish. SIZES: 40 litre, 8 litre, 4 litre, 2 litre, 1 litre & 500ml packs.



ALL SURFACE PRIMER

Very fast drying stain blocking and sealing primer, with excellent inhibiting pigments for ferrous and non-ferrous metals. Because of its outstanding adhesion to almost every surface NoRUST is the preferred multi-purpose coating for most paint systems. 20 minute drying - rapid recoating. **Not suitable for areas of continuous immersion.** SIZES: 10 litre, 4 litre, 2 litre, 1 litre, 500ml, 250ml & 100ml (white). *ALSO AVAILABLE IN 300g SPRAY CAN.*



USEFUL TIPS

Surface preparation is essential for good results. Clean the surface before sanding. Then wipe with NORCLEAN-PLUS prior to coating. Normally a light sanding should be done to promote better adhesion. When using SHIPSHAPE PRIMER-UNDERCOAT a minimum of 24 hours must elapse before overcoating with NORTHANE or other NORGLASS products.



SHIPSHAPE PRIMER-UNDERCOAT

The ultimate high-build performance epoxy coating to obliterate background irregularities and provide filling properties prior to coating with single or 2 pack finishes. Suitable for areas of continuous immersion and osmosis repairs. Commonly used as a primer-undercoat for non-ferrous metals and as a topcoat in the bilge area of boats because of its satin gloss finish. SHIPSHAPE is the preferred primer for fibreglass. SIZES: 10 litre*, 4 litre, 2 litre, 1 litre & 500ml packs. *Available in white only



WEATHERFAST PRI-COAT

Primes as it undercoats. A heavy-bodied low odour primer and undercoat combined. For use on timbers and wall cladding. It is fine textured for easy sanding and provides a dense off-white colour for fast finishing. SIZES: 10 litre, 4 litre, 2 litre, 1 litre, 500ml, 250ml & 100ml.



NORSHIELD ANTI-CORROSIVE PRIMER

Red oxide primer for ferrous metals such as steel, iron and wrought iron. Bound into a high strength 2 pack epoxy resin coating for maximum durability. Ideal for all steel surfaces from high rise to underwater use. Excellent film build characteristics. SIZES: 4 litre & 1 litre packs.



Shipshape & Northane are the perfect system to refurbish a bathtub.



DIY LIKE A PRO

INTERIOR | EXTERIOR GLOSS FINISHES

WEATHERFAST PREMIUM ENAMEL AND NORTHANE STANDARD COLOUR RANGE

Unlimited range of custom factory colours can be created for NORTHANE upon request (extra fee applies). *These are representations of the colours only. True colours are shown on the lid.*



FLEET RED	AIR-SEA ORANGE	VINTAGE GREEN	MARKER YELLOW
PORT WINE	OPAL WHITE	MIDNIGHT	BOTANY BLUE
PAPERBACK	REEF BLUE	SANDSTONE	DOCKSIDE GREY
ADMIRALTY BLUE	SHADOW GREY	PACIFIC BLUE	PEARL
STORM MIST	BLACK	WHITE	

The Summerhouse in Bowral NSW has been finished using 2 coats of Northane, a special colour for the roof and trims and opal white on the wood.



NORGLASS ARE PROUD TO BE THE EXCLUSIVE AUSTRALIAN DISTRIBUTOR OF THE MÖTSENBÖCKER'S LIFT OFF® RANGE

MÖTSENBÖCKER'S LIFT OFF® ACRYLIC PAINT REMOVER

A patented water based and biodegradable formula designed to specifically remove acrylic based paints from all surfaces, including carpets, clothing, upholstery, brick and concrete. Lift Off® Acrylic Based Paint Remover also works great on all acrylic based paint clean up, from tools to overspray. SIZES: 133ml, 651ml and 3.78L.



MÖTSENBÖCKER'S LIFT OFF® FOOD, DRINK AND PET STAIN REMOVER

Eliminates some of the toughest stains from a variety of surfaces, including carpets, upholstery (sofas and vehicle seats) and clothes. Water based and biodegradable formula. Low VOC. SIZE: 651ml.



MÖTSENBÖCKER'S LIFT OFF® TAPE, LABEL AND ADHESIVE REMOVER

Mötsenböcker's Lift Off® Tape, Label and Adhesive Remover is destined to become a classic. This original product still remains a top seller of our available formulas. Patented as a low VOC formula, this product is effective for grease, gum, oily and adhesive problems on carpets, fabrics, hard surfaces, vinyl, metal and tile. SIZES: 133ml, 651ml and 3.78L.



MÖTSENBÖCKER'S LIFT OFF® PEN, INK AND MARKER STAIN REMOVER

Consumers say Mötsenböcker's Lift Off® Pen, Ink & Marker Stain Remover is perfect for removing ink; and contractors claim it's perfect for permanent markers and graffiti. Both are satisfied with the results. Designed to work effectively on difficult and hard surfaces, such as vehicle exteriors and interiors, while not damaging delicate surfaces, such as clothing and upholstery. SIZES: 651ml and 3.78L.



MÖTSENBÖCKER'S LIFT OFF® SPRAY PAINT AND GRAFFITI REMOVER

A patented, water-based, biodegradable formula containing low VOCs. It effectively removes all types of oil based paints, varnishes, lacquers and spray paints from all types of surfaces, including; stucco, concrete, cars & trucks, brick, metal and plastic. SIZES: 651ml and 3.78L.



SPRAY FOAM & SILICONE CAULK REMOVER

Motsenbocker's Lift Off® Spray Foam & Silicone Caulk Remover removes wet or dry silicones, latex-based caulks, polyurethane foams and glues, expansion foams, construction adhesives and acrylic-latex caulks. The new and safe technology works to remove both fresh and cured sealants from tools, hands, hard surfaces, flooring, fabric, carpet, ceramic, stone, wood, plastic, metal and vinyl. SIZES: 133ml



STAIN REMOVAL KIT

Our Stain Removal Kit contains 3 compact sized formulas to remove stains, tape, grease and markers around the house, office and traveling. These products are low VOC, biodegradable, safe for the environment and user. They work on a variety of surfaces, including tools, hands, tile, windows and vehicles, as well as carpeting, upholstery and clothing. SIZES: 177ml



NORGLASS PAVING PAINT

NORGLASS LOW SHEEN PAVING PAINT IN SLIP RESISTANT AND SMOOTH FINISHES



NORGLASS PAVING PAINT is rapidly becoming the product of preference in Australia. NORGLASS SLIP RESISTANT PAVING PAINT was awarded a slip rating of P5 in recent testing by Nata Accredited Sliptest.

NORGLASS SLIP RESISTANT PAVING PAINT IS SUITABLE FOR:

- External pavements, ramps, driveways and carports*
- Hotels, offices, public buildings, schools & kindergartens
- Supermarkets and shopping centres
- Swimming pool ramps, surrounds and stairs
- Sporting facilities, change rooms and concourses
- Hospitals and aged care facilities*

*NOTE: For gradients greater than 1 in 12 contact NORGLASS before applying.



DIY LIKE A PRO

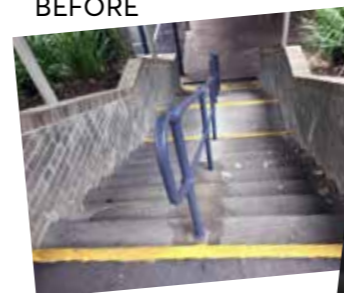
- Fast drying
- Easy to use
- No mixing
- Low odour
- UV Inhibited
- No hot tyre pick up
- Uniform finish
- Hard wearing
- Available in 10 litre, 4 litre & 1 litre sizes.



*SMOOTH only available in 8 colours.

These are representations of the colours only. True colours are shown on the lid.

BEFORE



AFTER



Central Coast Grammar School - 2 coats of SR PAVING PAINT in PEWTER with SAFETY YELLOW strips on their stairs. The hand rail is coated in NORTHANE for food & chemical resistance.



INTERIOR | EXTERIOR ACRYLIC FINISHES

WEATHERFAST GLOSS ACRYLIC

- Perfect for small projects
- Cleans up with water
- 16 great colours incl. BLACK and WHITE
- Available in 250ml & 100ml sizes

COLOURS INCLUDE
GOLD & SILVER



WEATHERFAST PREMIUM ENAMEL TINY TIN RANGE

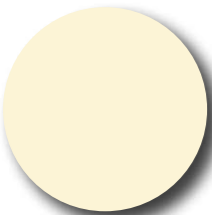
- Available in 17 great colours including BLACK and WHITE.
- 250ml & 100ml sizes only.



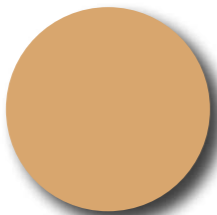
LOOK - THE COLOUR'S
ON THE LID!

WEATHERFAST SLIP RESISTANT DECK PAINT

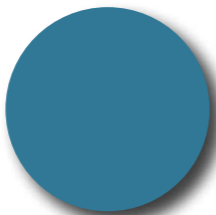
These are representations of the colours only. True colours are shown on the lid.



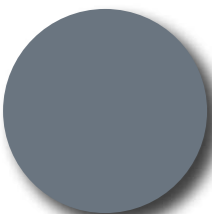
ARCTIC WHITE



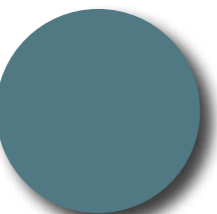
SHORELINE CREAM



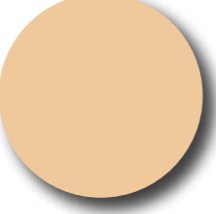
HORIZON BLUE



SQUALL GREY



MISTY GREY



CREAM



SEASHELL

FINISH COATS

NORTHANE ULTRA HIGH GLOSS

The premium finish 2 pack linear polyurethane for durability and fade resistance. Excellent chemical resistant, foodsafe, waterproofing and weathering properties. Ideal for refurbishing most surfaces. Home, leisure, commercial industrial and automotive. Unlimited range of factory colours upon request (extra fee applies).

SIZES: 10 litre, 4 litre, 2 litre*, 1 litre & 500ml packs.

*2 litre size only available in white.



WEATHERFAST PREMIUM GLOSS

Modified polyurethane low odour paint to produce the highest quality marine grade gloss enamel. For use on prepared steel, aluminium, concrete, timber and other surfaces where performance and durability is paramount. Not suitable for areas of continuous immersion.

SIZES: 10 litre*, 4 litre, 2 litre*, 1 litre, 500ml, 250ml** & 100ml**.

*Only available in black & white.

**Available in Fleet Red, Air-sea Orange, Vintage Green, Marker Yellow, Opal White, Port Wine, Teal, Sandstone, Pearl, Reef Blue, Admiralty Blue, Shadow Grey, Seamist, Pacific Blue, Botany Blue, Satin Black, Matt Black, Black & White.



WEATHERFAST SATIN BLACK AND WHITE

Durable interior - exterior modified low odour polyurethane. Ideal for surfaces where less reflected light is desirable. Has a classic finish look. Not suitable for areas of continuous immersion.

SIZES: 10 litre* 4 litre, 2 litre, 1 litre, 500ml, 250ml, 100ml**

*Available in White only

**Available in Black only



WEATHERFAST MARINE DECK PAINT

Unique slip resistant coating incorporating plastic granules to provide a uniform paint film for traction when wet. The profile also facilitates easy cleaning. For use on fibreglass, steel, concrete, timber and aluminium decks. SIZES: 4 litre & 1 litre.



WEATHERFAST HEAT SAFE BLACK

A Heat resistant, self priming paint suitable for areas that are subjected to heat. Perfect for BBQ, pot belly stove and oven surrounds. No Primer Required. Heat resistant to 400 degrees. SIZES: 1 litre, 500ml, 250ml, & 300g spray can



AEROSOL PAINTS



To compliment our WEATHERFAST PREMIUM ENAMEL and NoRUST ALL SURFACE PRIMER ranges we have added 300g SPRAY CANS. And look out for POLY CLEAR GLOSS and SATIN and HEAT-SAFE BLACK available in spray cans too. Same quality finishes and a new user friendly nozzle.

NORTHANE ULTRA HIGH GLOSS in reef blue and white transformed this caravan



FIBREGLASS | EXTENDERS | SUNDRIES

GREY-AWAY GRAIN RESTORER

Removes grey oxides from timbers restoring the natural wood grain. An excellent cleaner and stain remover for fibreglass surfaces.

CONCENTRATED: Dilute with equal parts fresh water.

SIZES: 5 litre & 1 litre.



MICROTALC EXTENDER

Fine-textured powder for extending NORSYSTEM to make an economical filler that can be trowelled on, easily sanded and will hold to vertical surfaces.

SIZES: 5kg, 1kg & 500g.



NORCELLS EXTENDER

A blended lightweight extender for NORSYSTEM where flexibility and weight are the main attributes of this product.

SIZES: 1kg, 500g & 250g.



FLATTENING AGENT

Fine porous powder designed to absorb the gloss of NORGLASS paint films converting them into a satin finish. Addition rate of 100g for 4 litres of paint, 25g for 1 litre. More or less can be added to achieve the desired gloss level.

SIZES: 250g, 100g & 25g.



GLUE PROMOTER

A fine white powder that can be added to NORSYSTEM to make it into an economical epoxy glue mix.

SIZES: 240g & 60g.



CONCRETE AND CERAMIC CLEANER

A fast acting solution to prepare concrete prior to painting. On ceramics, this product will remove foreign matter & stains. Easy to use.

SIZES: 5 litre & 1 litre.



METAL-ETCH CLEANER

A specifically designed metal conditioner for pre-treating bare aluminium, galvanised iron and other non-ferrous alloys such as brass, copper and bronze. Easy to use. Brush on and wash off. Thixotropic gel is designed to hold the product on vertical surfaces. Stirring or shaking the contents converts METAL-ETCH into a liquid for hard to reach areas. This product is also an excellent rust remover on steel.

SIZES: 4 litre & 1 litre.



ORANGE-PEEL GEL PAINT STRIPPER

NORGLASS has released a citrus style paint stripper using the latest technology in resins and additives.

ORANGE-PEEL features include:

- Holds on to vertical surfaces
- Removes multiple paint layers
- Cleans up with water
- Evaporates slowly
- Works faster than other citrus style paint strippers
- Does NOT contain Methylene Chloride
- Can be used indoors and outdoors



ORANGE-PEEL is suitable for:

- Polyurethanes
- Epoxies
- Enamels
- Clears
- Single and 2 pack products
- Water based paints

SIZES: 10 litre, 4 litre, 1 litre & 500ml.

SLIP RESISTANT AGENT

Plastic, non-settling granules that can be incorporated in most types of paint finishes (except high-gloss paints) to increase slip resistance. Uniform particle size gives a professional finish to all coatings. Can also be used in clear satin varnishes at reduced levels of addition.

SIZES: 200g for 4 litres of paint & 50g for 1 litre of paint.



FIBREGLASS REPAIR KIT

A comprehensive DIY pack including 250ml POLYESTER RESIN with CHOPPED STRAND MATT (140mm x 1m), CATALYST, mixing sticks, gloves, paint brush. Full instructions included. Perfect for a variety of household, marine and general repair work.



FIBREGLASS CLOTH AND CHOPPED STRAND MATT

Scrim-weave, glass fabric for reinforcing NORGLASS LIQUID GLASS, NORSYSTEM or POLYESTER RESINS. Used for general repair work as well as strengthening timber, fibreglass and other surfaces.

SIZES: CLOTH available in 1m² & .5m² packs.

CHOPPED STRAND MATT available in 1m² & .5m².



THINNERS | CLEARS

NORCLEAN - PLUS

A 100% pure cleaning solvent that leaves the surface "squeaky clean" with no residue. Economical to use. Clean is green.

SIZES: 20 litre, 4 litre & 1 litre.



WEATHERFAST SPRAYING THINNERS

Blended thinner formulated for use with all WEATHERFAST products. NoRUST PRIMER, PRI-COAT, PREMIUM GLOSS, DECK PAINT, SATIN WHITE, MICROSHIELD VARNISH, POLY CLEARS and PAVING PAINTS.

SIZES: 20 litre, 4 litre, 1 litre & 500ml.



WEATHERFAST BRUSHING THINNERS

Retarder-thinner for WEATHERFAST products.

NoRUST PRIMER, PRI-COAT, PREMIUM GLOSS, DECK PAINT, SATIN WHITE, MICROSHIELD VARNISH, POLY CLEARS and PAVING PAINTS to slow the drying rate and to improve brushability. Also used as a clean-up solvent for WEATHERFAST products.

SIZES: 4 litre, 1 litre & 500ml.



ACETONE

Fast-evaporating, economical cleaning solvent for many surfaces. Also a clean-up solvent for NORGLASS POLYESTER RESIN.

SIZES: 20 litre, 4 litre, 1 litre & 500ml.



EPOXY THINNER

Slow-evaporating solvent for thinning and cleaning up after using NORGLASS EPOXY products.

SIZES: 20 litre, 4 litre, 1 litre & 500ml.



NORTHANE SPRAYING THINNERS

Formulated blend of solvents specifically designed for use with NORGLASS NORTHANE, NORSHIELD PRIMER and SHIPSHAPE PRIMER-UNDERCOAT. Can also be used as a clean-up solvent for these products.

SIZES: 20 litre, 4 litre, 1 litre & 500ml.



NORTHANE BRUSHING THINNERS

Retarder-thinner for NORTHANE, to slow the drying rate and improve brushability.

SIZES: 4 litre, 1 litre & 500ml.



MICROSHIELD MARINE SPAR VARNISH

Traditional Marine Spar Varnish with a super high gloss finish with maximum state of the art U/V inhibitors and stabilisers for areas of extreme exposure. Ideal for panelling, doors, hand rails and general varnish work.

SIZES: 10 litre, 4 litre, 2 litre, 1 litre & 500ml.



WEATHERFAST POLY CLEAR GLOSS

Tough abrasion resistant gloss coating with high levels of U/V inhibitors for interior and exterior use. Ideal for floors, furniture and marine applications. Fast drying, low odour properties an advantage for interior use.

SIZES: 10 litre, 4 litre, 2 litre, 1 litre, 500ml & 250ml. ALSO AVAILABLE IN 300g SPRAY CAN.



WEATHERFAST POLY CLEAR SATIN

Tough low odour satin lustre for furniture, walls, panelling, floors, cork and parquet.

SIZES: 10 litre, 4 litre, 2 litre, 1 litre, 500ml & 250ml. ALSO AVAILABLE IN 300g SPRAY CAN.



WEATHERFAST A1 PENETRATING TIMBER OIL

A modified premium penetrating oil that nourishes timber back to its natural state whilst eradicating organic growth deep within the substrate. Low odour and UV inhibited.

SIZES: 10 litre, 4 litre, 2 litre & 1 litre.



WEATHERFAST A2 FINISHING TIMBER OIL

A premium finishing timber oil containing the best UV inhibitors available. Developed to bring the natural lustre of the timber back to its original state.

SIZES: 10 litre, 4 litre, 2 litre & 1 litre.



NORTHANE CLEAR GLOSS AND SATIN

2 pack, non-yellowing linear polyurethane with outstanding chemical and abrasion resistance. Non toxic cured film. Ideal for waterproofing fish ponds and fountains. May be used in continuously immersed conditions. Excellent heat resistance and durability makes this a premium clear coating. Ideal on surfaces where graffiti is a potential problem. Graffiti can easily be removed with solvents without damage to the NORTHANE CLEAR. For use on floors, furniture and exterior applications.

SIZES: 10 litre, 4 litre, 2 litre, 1 litre & 500ml packs.



GREAT PROJECTS MADE WITH NORGLASS PRODUCTS



DIAMOND JUBILEE STATE COACH

10 NORGLASS products were used to provide the ultimate finish on the Diamond Jubilee State Coach built by Jim Frecklington and presented to Her Majesty Queen Elizabeth II in 2014



THE NORGLASS BOAT was painted using NORTHANE Shadow Grey with a touch of Botany Blue and White.



SPIRIT OF AUSTRALIA II

NORGLASS is proud to sponsor David & Ken Warby and the Spirit of Australia II, with SHIPSHAPE and NORTHANE being used on the vessel for their upcoming attempt at the world water speed record.



BEFORE AND AFTER OUTDOOR SETTING

This outdoor setting was wet down with water, then two coats of NORGLASS GREY-AWAY was applied with a light scrubbing brush, one more wash down with water to finish. Total job done in 30 minutes. Good as new!



DEAL ISLAND 50

This boat built by The Wooden Boatshop, Sorrento VIC, was painted using SHIPSHAPE PRIMER UNDERCOAT and finished with NORTHANE.

DOING A PROJECT USING NORGLASS PRODUCTS?

Share a pic of your pride and joy and it just may make it onto the pages of our catalogue! Email your photos and a brief description, including what NORGLASS products you used to norglass@bigpond.net.au